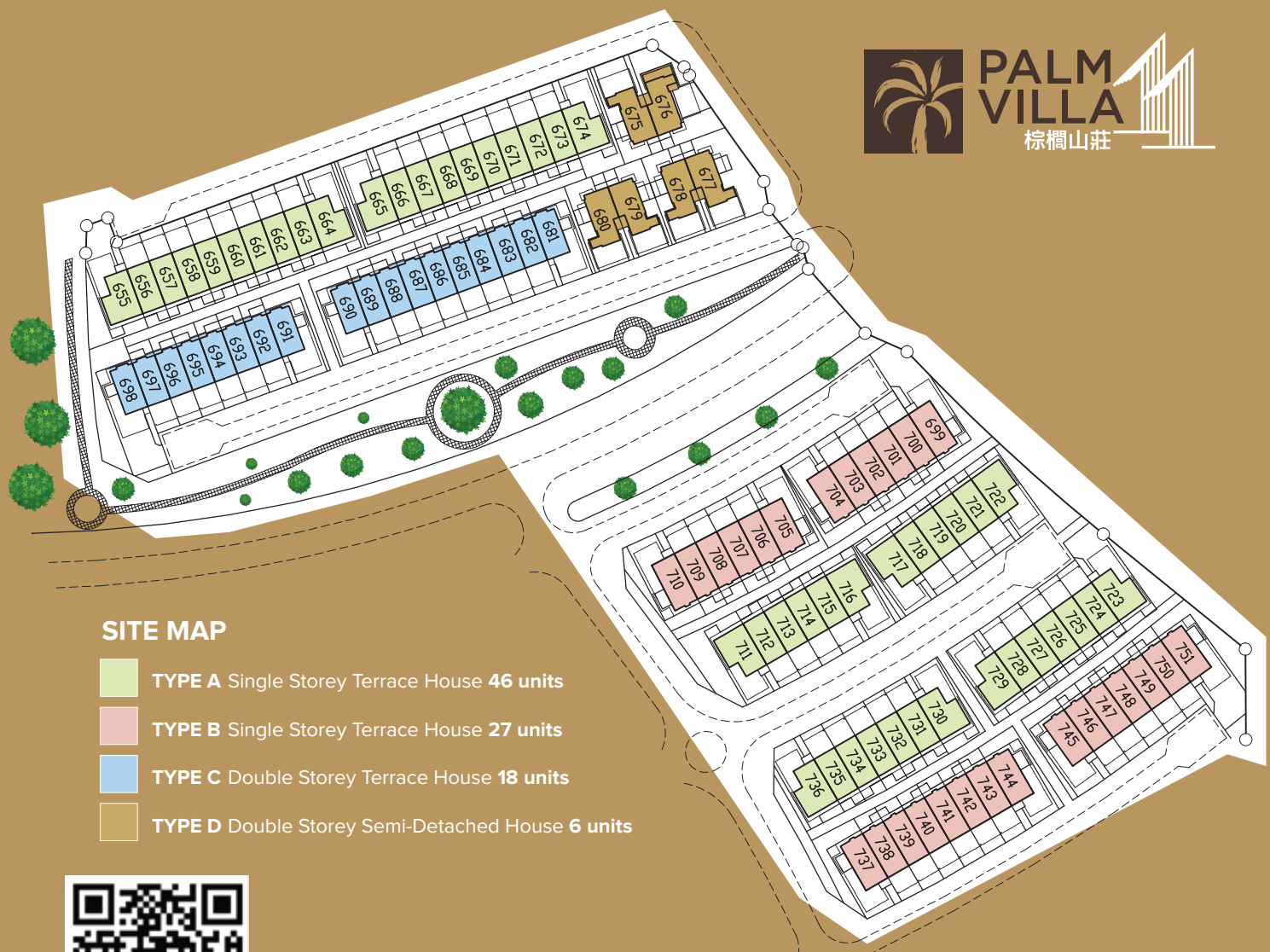


美夢成真
夢想家園



BETTER HOME
BETTER LIFE

CONTACT US
NOW!

085-655827 / 656827
013 8494027

PROJECT ADDRESS

Lot 205 (Block 2 of P/L 187 and 188), Block 10, LLD (PHASE 4).

SITE MAP

- TYPE A Single Storey Terrace House 46 units
- TYPE B Single Storey Terrace House 27 units
- TYPE C Double Storey Terrace House 18 units
- TYPE D Double Storey Semi-Detached House 6 units



SCAN FOR THE LOCATION

LOCATION MAP



TYPE A Single Storey Terrace House 46 units



TYPE B Single Storey Terrace House 27 units



TYPE C Double Storey Terrace House 18 units



TYPE D Double Storey Semi-Detached House 6 units

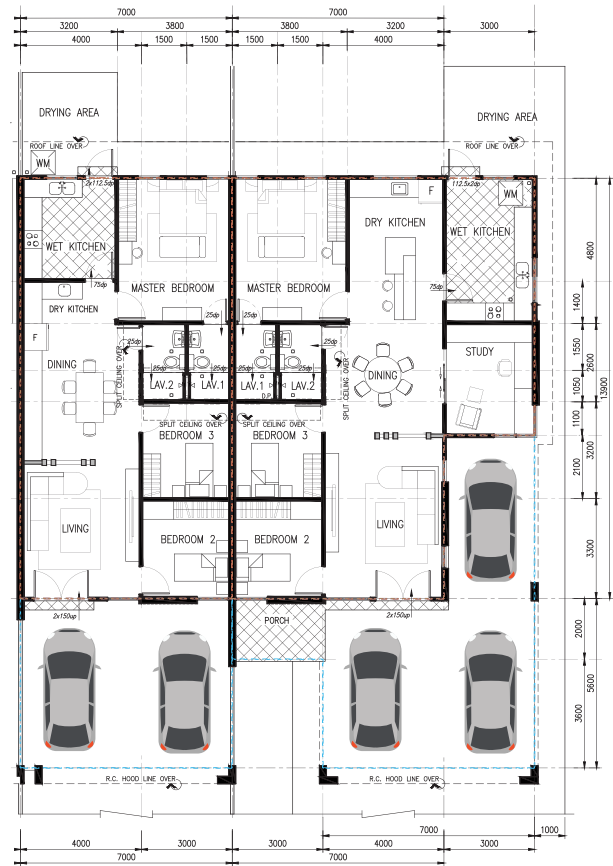
Tenure of Land & Encumbrances : Approximately 60 years
 SPA Approval Reference No. : To be provided in near future
 Majlis Bandaraya Miri : To be provided in near future
 Expected Completion Date : December 2025
 Housing Development License No.: L0097/KP/HD/04/2022/0010
 Validity Period : 01.12.2022 - 19.04.2025
 Advertisement and Sale Permit No.: To be provided in near future
 Validity Period : To be provided in near future

FOR MORE INFORMATION, KINDLY CONTACT US AT
085-655827 / 656827 / 013 8494027
PARK GARDEN RESIDENCES SDN BHD (1060077-M)
 Lot 1455, Piasau Industrial Estate, 98000 Miri,
 Sarawak, Malaysia. Fax : 085-651962
 Email : palmvilla@sinsianghai.com Palm Villa
 Website : www.sinsianghai.com

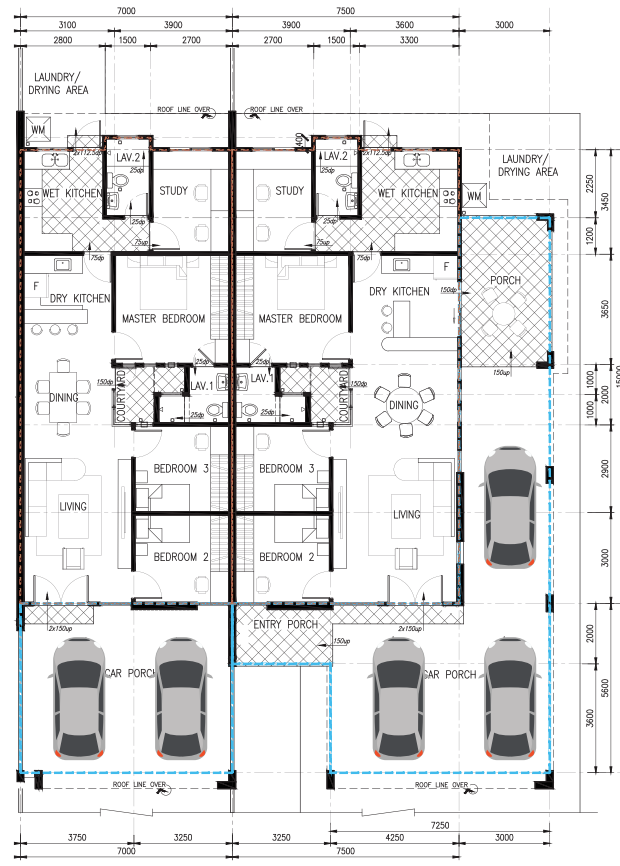


FOR MORE INFO

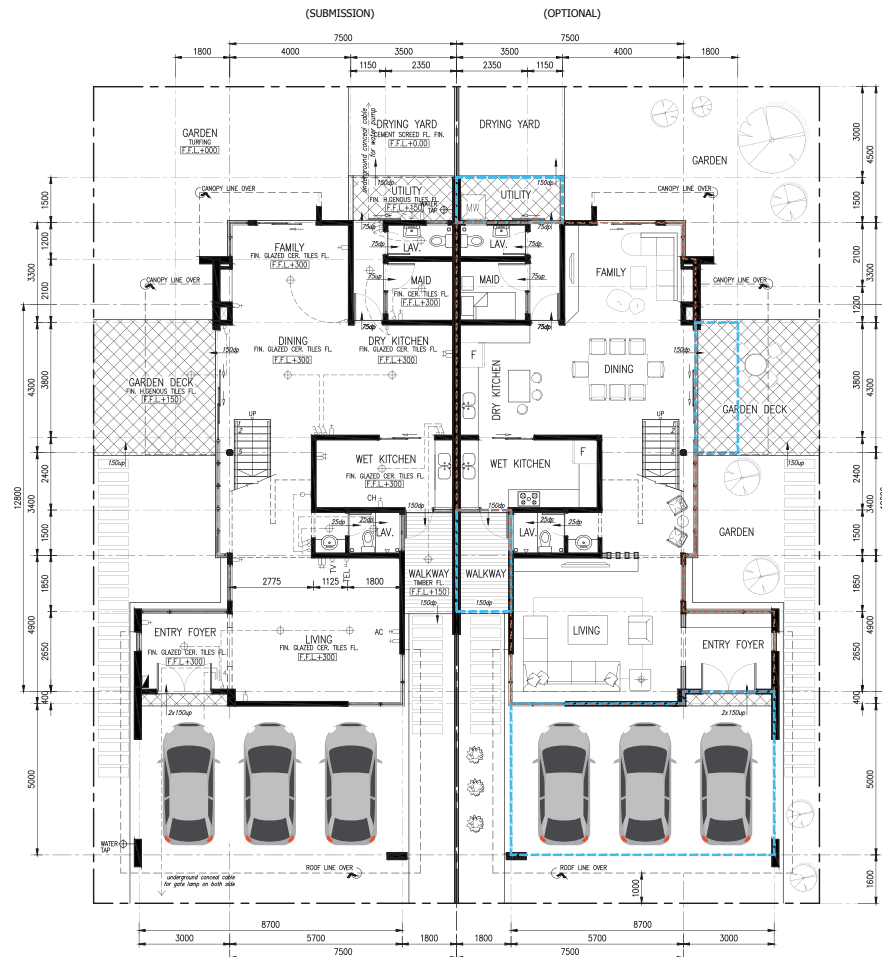
www.sinsianghai.com



TYPE A
Single Storey Terrace House
46 units

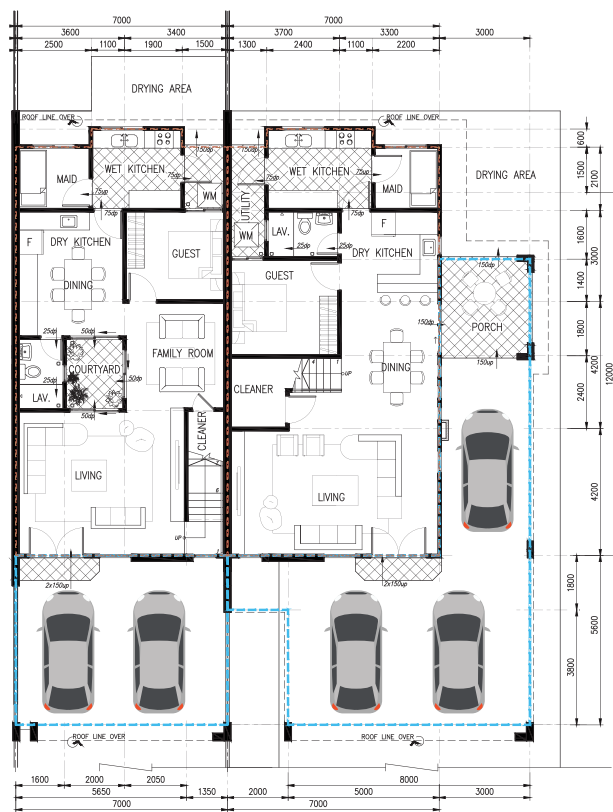


TYPE B
Single Storey Terrace House
27 units



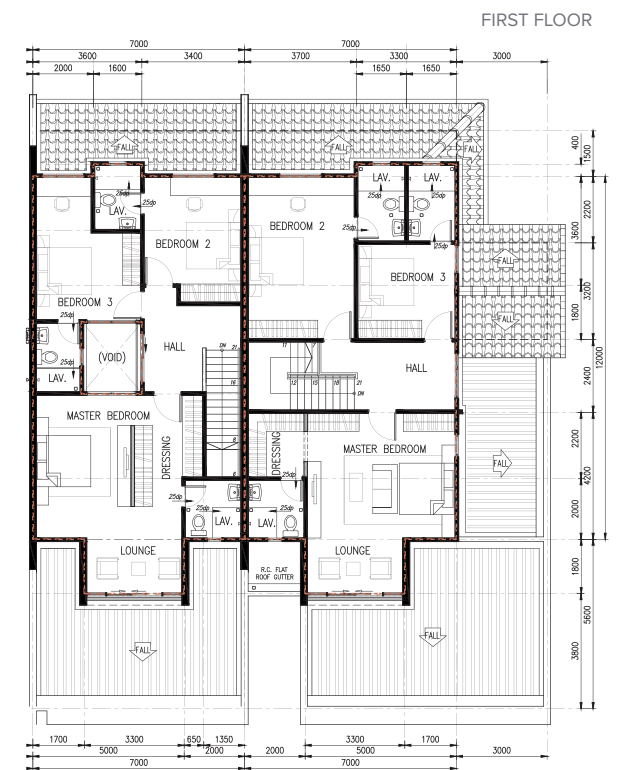
GROUND FLOOR

TYPE D
Double Storey
Semi-Detached House
6 units

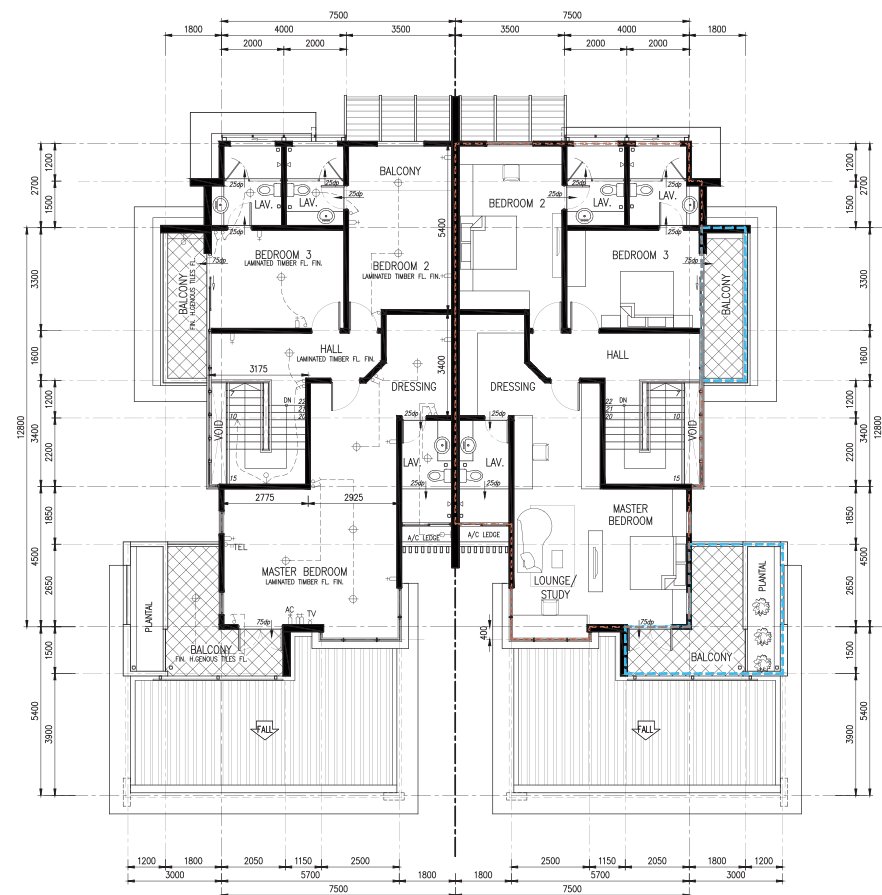


GROUND FLOOR

TYPE C
Double Storey Terrace House
18 units



FIRST FLOOR



FIRST FLOOR